

## Extra activities.

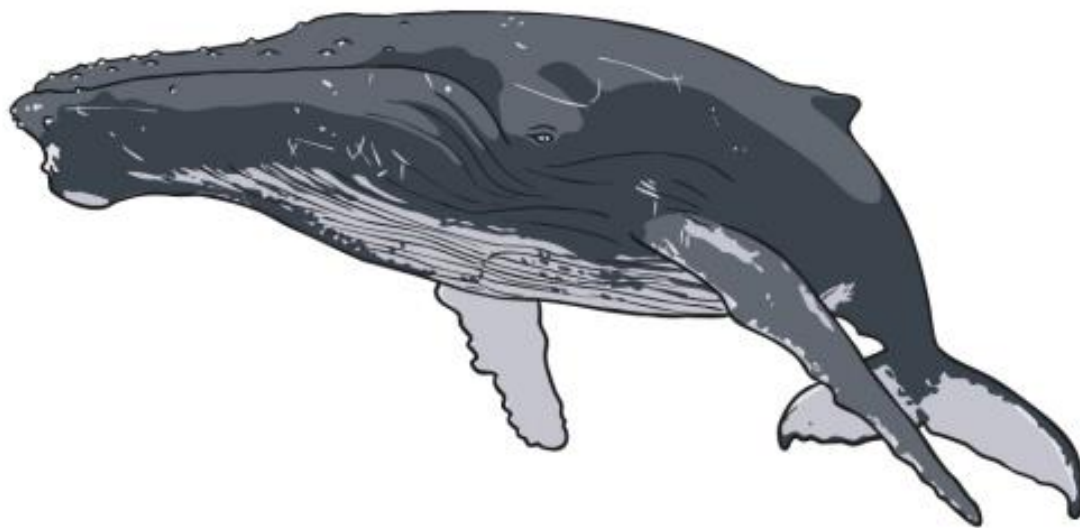
These are extra activities that you can do if you want to. They are completely optional!



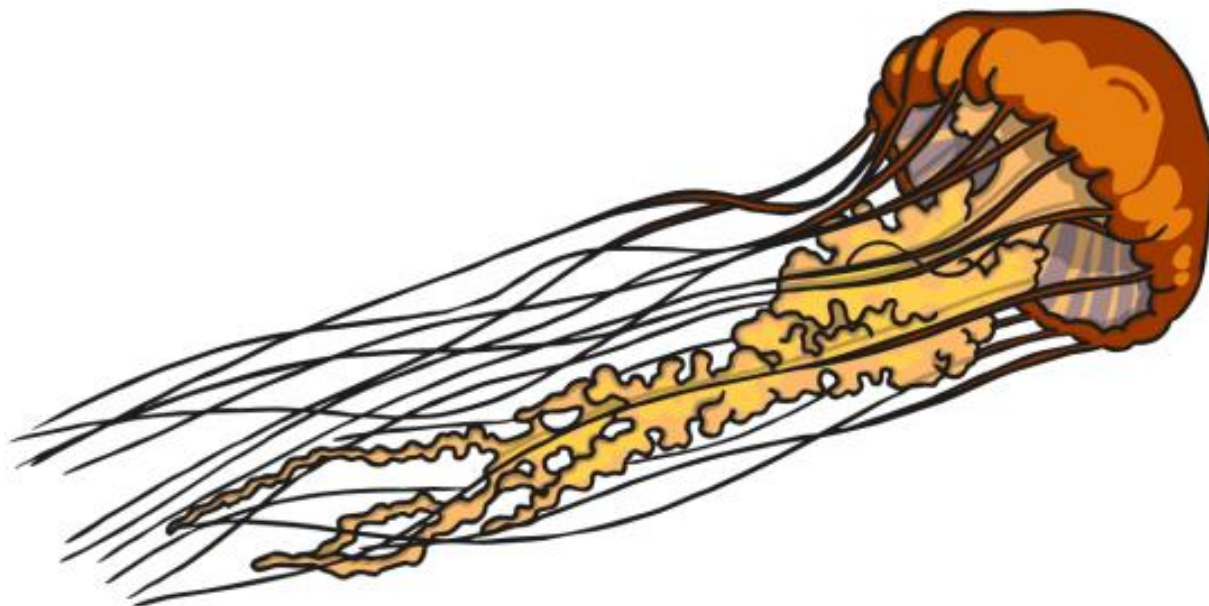
Think of three animals from each of the five groups of vertebrates.



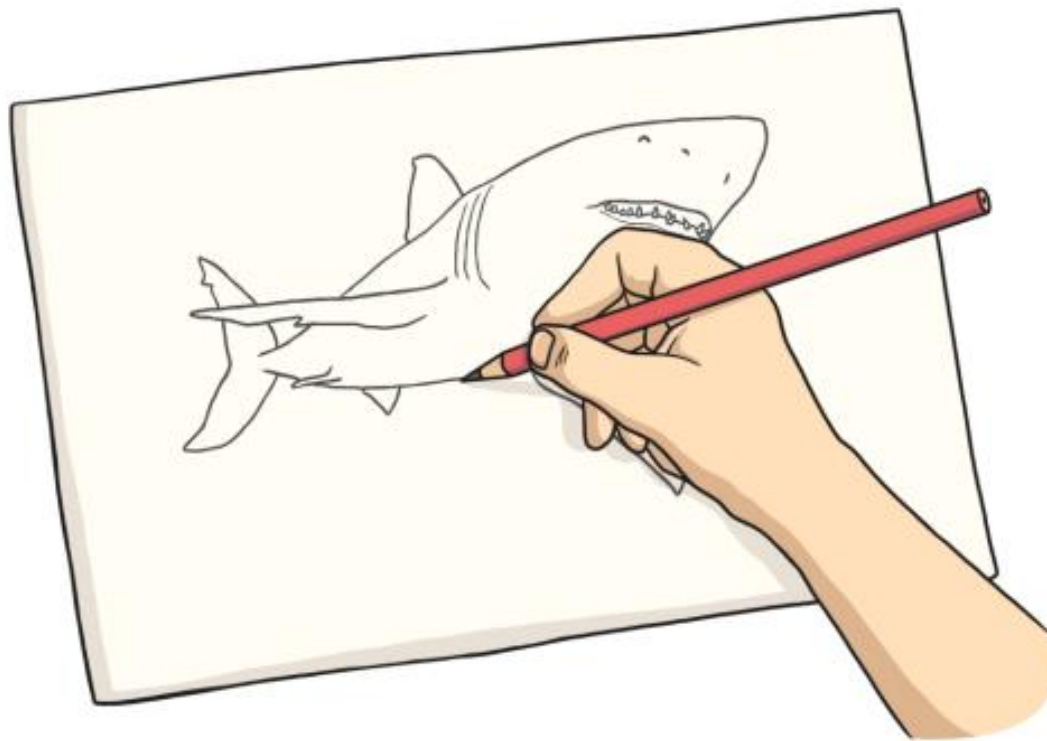
List five mammals and describe the characteristics that all mammals share.



List ten invertebrates and sort them  
into two or more groups.



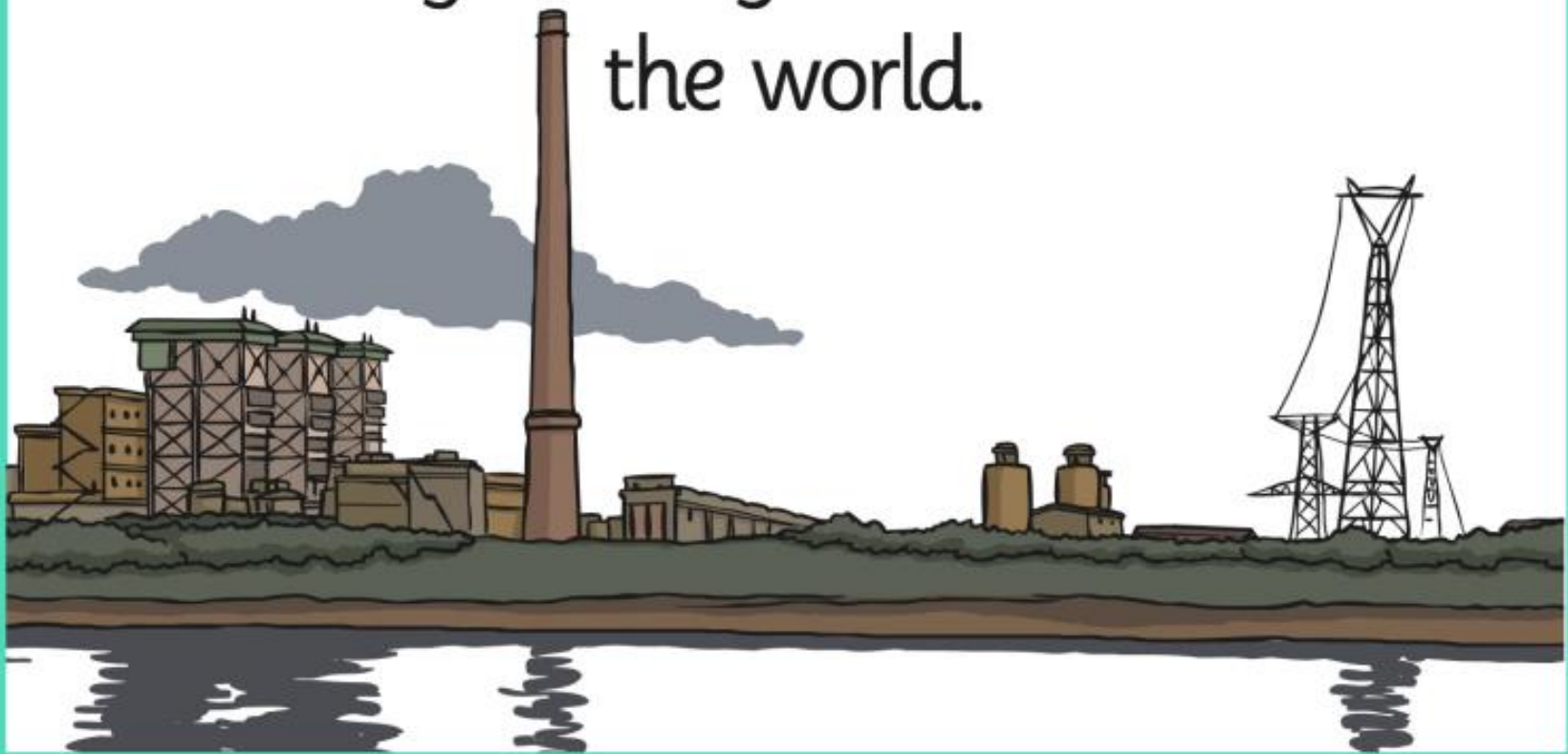
Draw five endangered animals.



List five dangers to local habitats and how they can affect living things.



List five environmental changes and how they endanger habitats around the world.





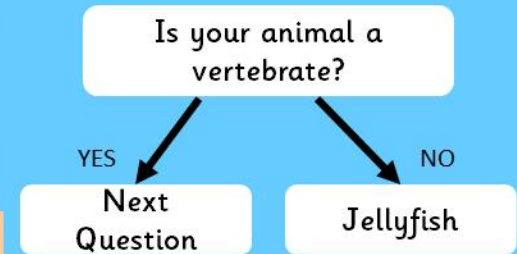
# Make a Sorting Key to Identify Animals



These photographs are the answers to your sorting key.  
To make a sorting key...

- Ask a question about whether your animal is a vertebrate or an invertebrate.
- Then what could you ask to sort an eagle from a clown fish?

**Challenge:** Design a sorting key for these creatures.





## Invent Categories for Sorting Plants



anemone



rose



thistle



cactus



sycamore tree



fern

## How would you sort these plants?

Put them into groups and give them group titles/names.

challenge:

Sort the plants again according to which habitats you think they prefer. Some of the photographs will help you if you are stuck.

# British Trees

Look at the different leaves from British trees.

Read the descriptions of the leaves.

Match the leaf to the description.



## Silver Birch

Small diamond-shaped light green leaves which have a toothed edge, that turn yellow in Autumn.

## Oak

The curvy leaves have almost no stem and grow in bunches. They turn brown in the Autumn.

**Yew**

Leaves are straight, small needles with a pointed tip. They grow in two rows on either side of each twig.

## Ash

There are 6-12 light green, oval leaves with long tips. There is an additional single leaf at the end. The leaves can move in the direction of sunlight. Ash leaves fall when they are still green.

### Challenge:

Using books or the internet, can you find out the names of more British trees?



# British Trees Answers

