

Give me 5
Times Tables Focus!

$8 \times 7 =$

$12 \times 6 =$

$5 \times 13 =$

$4 \times 7 =$

$42 \times 5 =$

Give me 5
Times Tables Focus!

$$8 \times 7 = 56$$

$$12 \times 6 = 72$$

$$5 \times 13 = 65$$

$$4 \times 7 = 28$$

$$42 \times 5 = 210$$

Drawing and Reading Line Graphs

Lesson
3

In Focus

Year	2000	2003	2006	2009	2012	2014
Museum entrance fee	£4.40	£4.30	£4.90	£5.40	£6.40	£6.70

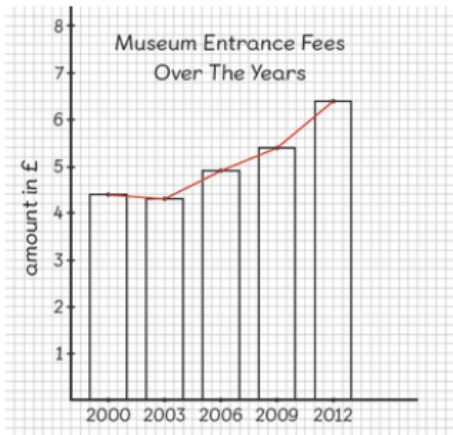
What is a good way to show how the entrance fee to a museum has changed over the years?

What statements can be made about the entrance fee over the years?
Why has that happened?

Can we represent this information in a different way?
Would a bar graph be helpful? Why or why not?
What would the scale on the y axis be?

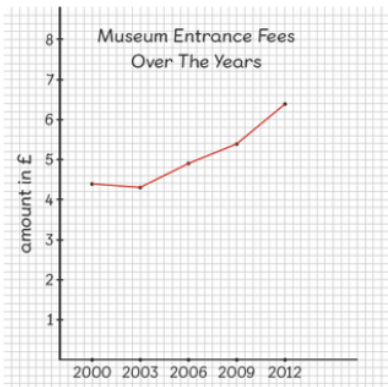
Let's Learn

1 We can use a line graph.



Each dot on the graph tells you the museum entrance fee for one particular year.

2 This is a line graph.

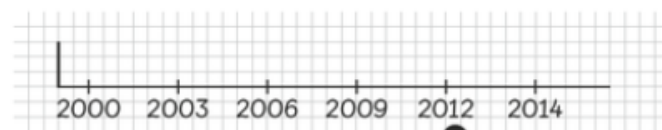


It shows us a trend or a pattern.

A line graph shows how a quantity changes over time.
We can say that the museum entrance fee has been increasing since 2003.

3

How should the museum entrance fee in 2014 be shown on the line graph?



This does not seem right. Why not?



This should be for 2015, not 2014.

Is it possible to predict the museum entrance fee for 2015?

What about for 2010?



Why is it incorrect? Does it matter?

Why does it matter?

What do you think will happen to the fee in 2015? How do you know?

What about for 2010? How do you know?

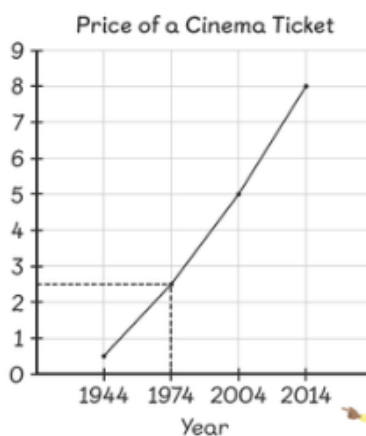
Guided Practice

This line graph shows the prices of cinema tickets in different years in another country.

\$ is the symbol for dollars.



price (\$)



Is this where the information for 2014 should be?



- 1 What was the price of a cinema ticket in 1974?
- 2 What is the difference in the price of a cinema ticket in 1944 and in 2004?
- 3 There is a mistake in the line graph. What is the mistake?

What can we say about the price of cinema tickets over the years in this country?



Name: _____ Class: _____ Date: _____

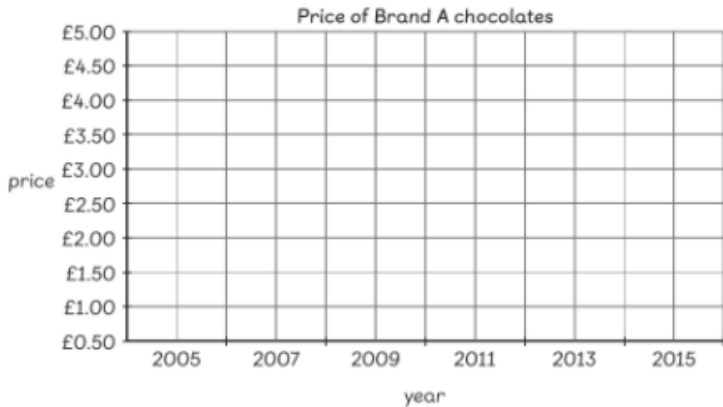
Worksheet 3

Drawing and Reading Line Graphs

- 1 The table below shows the change in the price of Brand A chocolates over the years.

Year	2005	2007	2009	2011	2013	2015
Price	£2.50	£2.00	£2.50	£3.00	£3.50	£4.00

Draw a line graph to show the information in the table.



(a) What was the price of Brand A chocolates in 2005?

(b) What was the price of Brand A chocolates in 2011?

(c) What is the difference in price between 2005 and 2015?

(d) In which year was the price of Brand A chocolates the lowest?

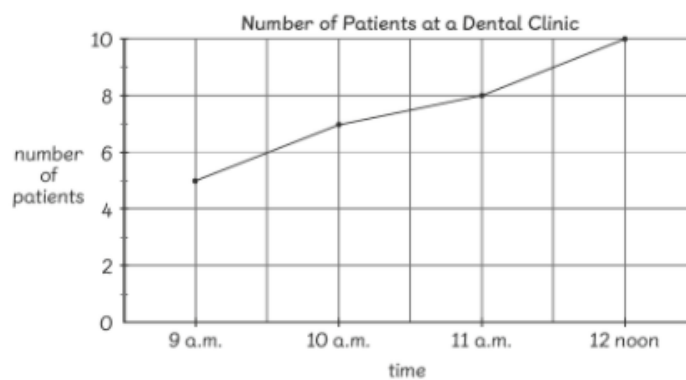
(e) Between which two years was the price difference the greatest?

(f) In which year did the price of Brand A chocolates drop?

(g) Circle the correct answer.

The price of Brand A chocolates (increased / decreased)
from 2005 to 2007 but (increased / decreased)
from 2007 to 2015.

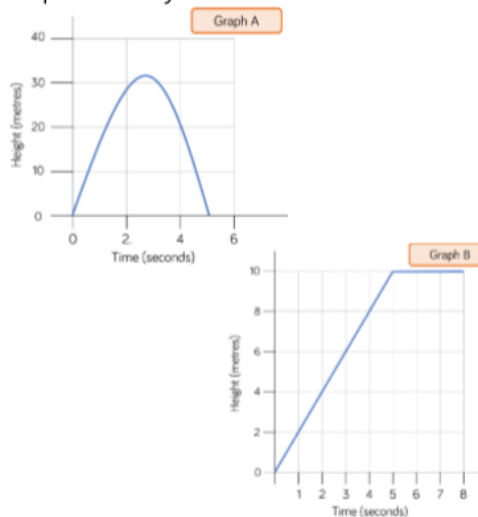
- 2 The line graph below shows the number of patients at a dental clinic from 9 a.m. to 12 noon.



- (a) At what time was there the most patients?
- (b) At what time was there the least number of patients?
- (c) What was the difference between the number of patients at 10 a.m. and at 12 noon?
- (d) Did the number of patients increase or decrease from 9 a.m. to 12 noon?

Challenge

Jack launched a toy rocket into the sky. After 5 seconds the rocket fell to the ground. Which graph shows this? Explain how you know.



Make up your own story for the other graph.

Answers

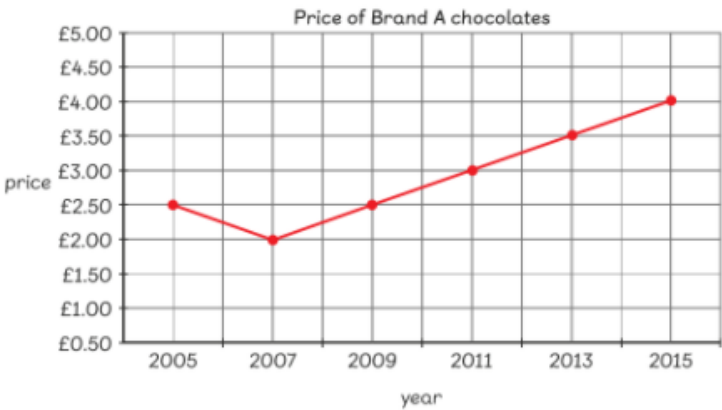
Worksheet 3

Drawing and Reading Line Graphs

- 1 The table below shows the change in the price of Brand A chocolates over the years.

Year	2005	2007	2009	2011	2013	2015
Price	£2.50	£2.00	£2.50	£3.00	£3.50	£4.00

Draw a line graph to show the information in the table.



Answers

(a) What was the price of Brand A chocolates in 2005?

£2.50

(b) What was the price of Brand A chocolates in 2011?

£3.00

(c) What is the difference in price between 2005 and 2015?

£1.50

(d) In which year was the price of Brand A chocolates the lowest?

2007

(e) Between which two years was the price difference the greatest?

2007 -
2015

(f) In which year did the price of Brand A chocolates drop?

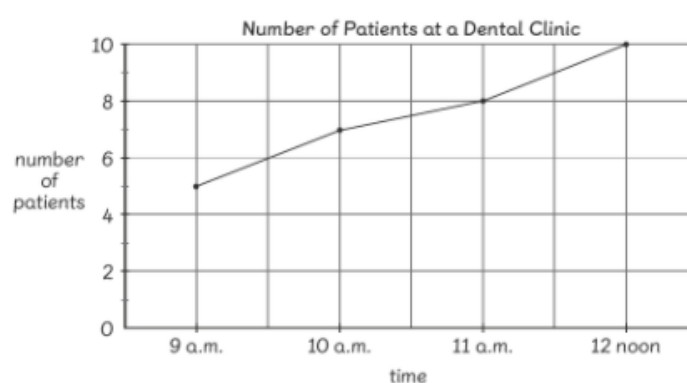
2007

(g) Circle the correct answer.

The price of Brand A chocolates (increased / decreased)
from 2005 to 2007 but (increased / decreased)
from 2007 to 2015.

Answers

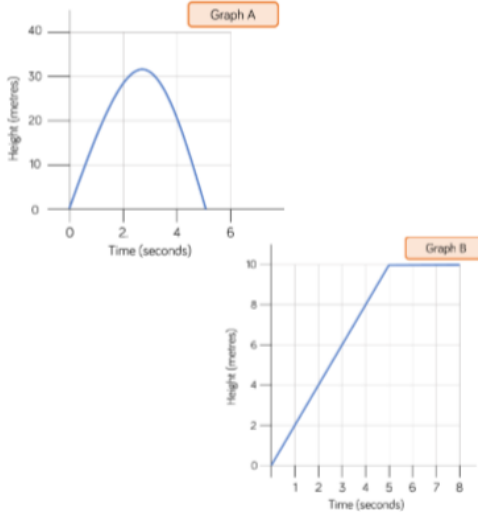
- 2 The line graph below shows the number of patients at a dental clinic from 9 a.m. to 12 noon.



- (a) At what time was there the most patients? 12 noon
- (b) At what time was there the least number of patients? 9 a.m.
- (c) What was the difference between the number of patients at 10 a.m. and at 12 noon? 3
- (d) Did the number of patients increase or decrease from 9 a.m. to 12 noon? increase

Answers

Jack launched a toy rocket into the sky. After 5 seconds the rocket fell to the ground. Which graph shows this? Explain how you know.



Graph A
The height of the rocket increases then decreases quickly again, returning to a height of 0 at 5 seconds.

Example story:
A bird flew up from the ground. It continued to fly upwards for 5 seconds then flew at the same height for another 3 seconds.

Make up your own story for the other graph.