

# PHE SW HPT: Guidance for Childcare and Educational Settings in the Management of COVID-19

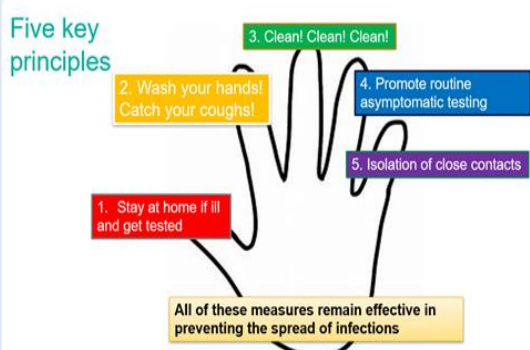
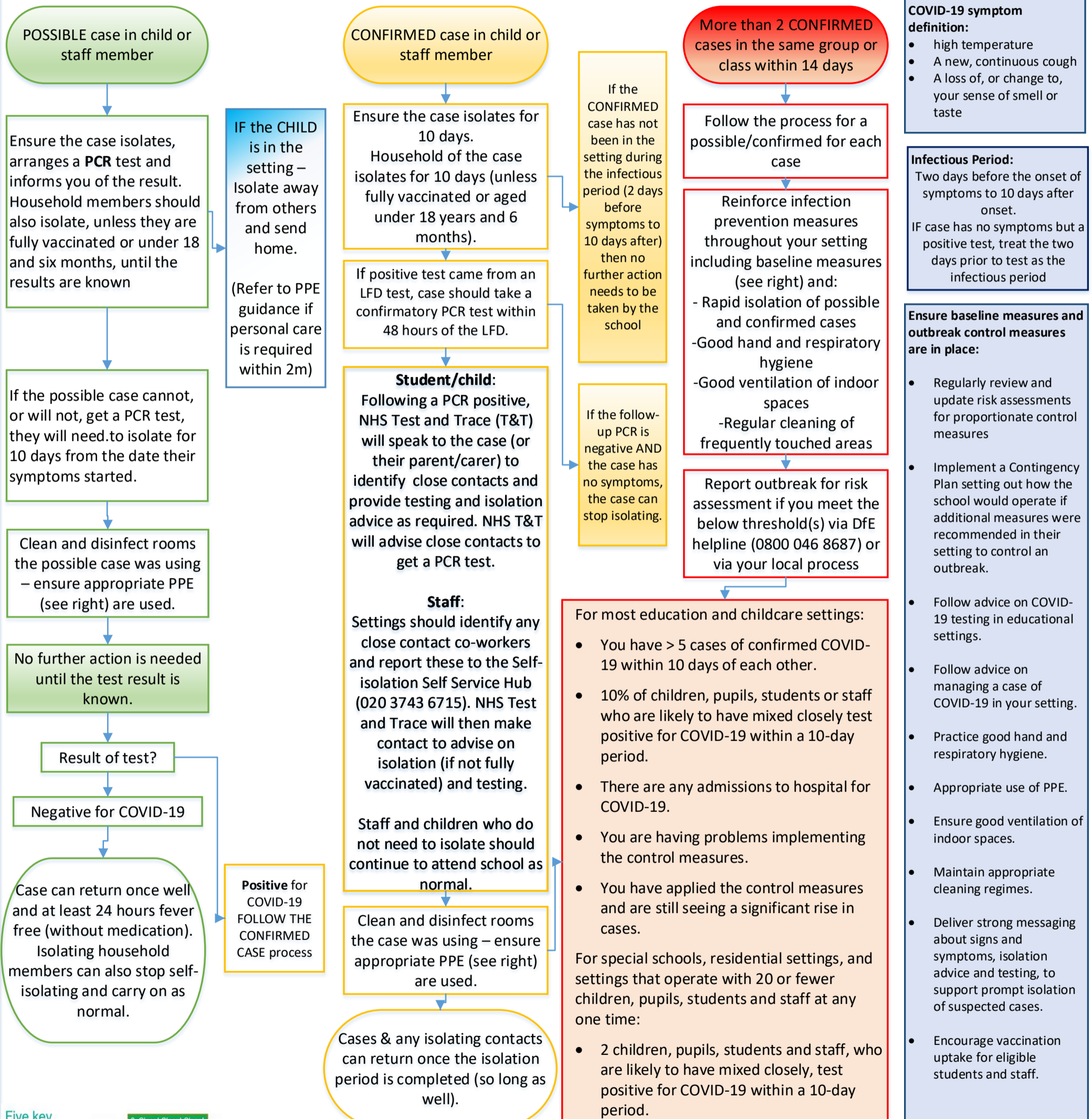
Version 15 2021.08.25

Prevent the spread of all infections by maintaining high standards of hygiene, including hand washing and regular cleaning and disinfection of surfaces. If you have any infection control concerns or questions please call the **Department for Education (DfE) advice line on 0800 046 8687** or, **Your local process or the DfE will escalate to the South West Health Protection Team (HPT) as necessary for further risk assessment. Please only call the HPT if they advise you to do so.**

GUIDANCE: Visit <https://www.gov.uk/government/publications/actions-for-schools-during-the-coronavirus-outbreak/schools-covid-19-operational-guidance#stepping>

FOR TESTING: Visit <https://www.gov.uk/get-coronavirus-test> or call 119.

BEFORE USING THE FLOWCHART – PLEASE CHECK THE DEFINITION OF A POSSIBLE AND CONFIRMED CASE – SEE BOX AT BOTTOM OF PAGE



**Possible and confirmed case definition**

**Possible case:** A child or staff member with a new continuous cough and/or high temperature and/or loss of, or change in, normal sense of taste or smell (anosmia) prior to PCR testing.

**Confirmed case:** PCR or LFD positive case with or without symptoms.

**LFD testing:** seek a follow-up PCR test following an LFD positive test at home or at an assisted site. Staff and pupils with a positive LFD test result should self-isolate in line with the <https://www.gov.uk/government/publications/covid-19-stay-at-home-guidance/stay-at-home-guidance-for-households-with-possible-coronavirus-covid-19-infection>. If the PCR is negative, and the case remains symptom free, the case can stop isolating.

NB: If any staff or pupils develop COVID19 symptoms ALWAYS seek a PCR test. **LFD tests should not be used on people with symptoms. LFD tests should not be used on children under the age of 11 years old.**