

Curriculum Area:
Number - Number Place Value

Main Teaching Focus:
Use the landmarks of 5s to help place other numbers on a washing line or bead bar.

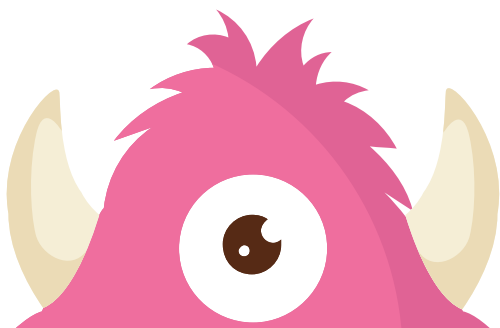
Outcome:
Recognise missing numbers from a 1-20 number washing line.

Use knowledge of other numbers to place numbers on a line.

Find amounts more, less and in between numbers.

Suggested Starter:
Numerals 1 to 10





0

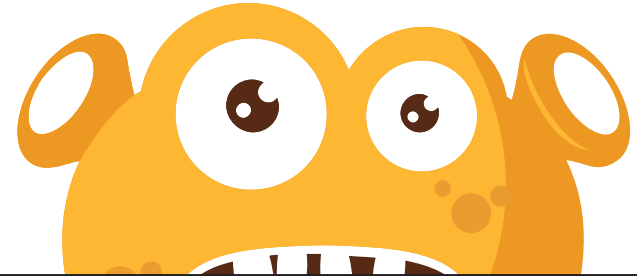


5



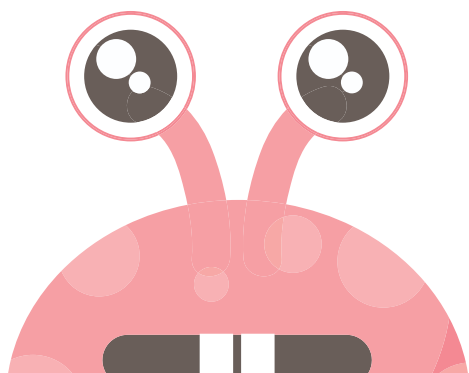


10



15



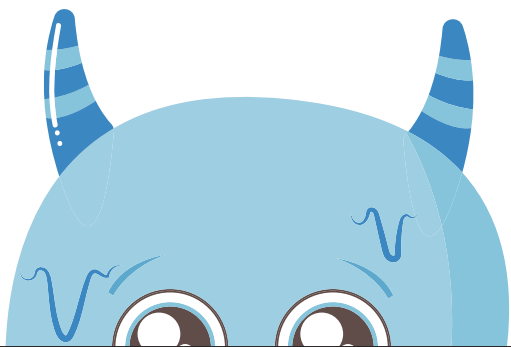


20

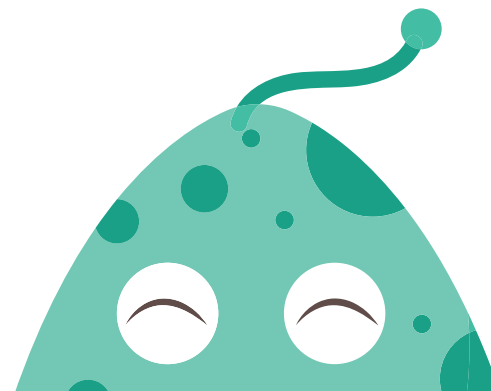


1



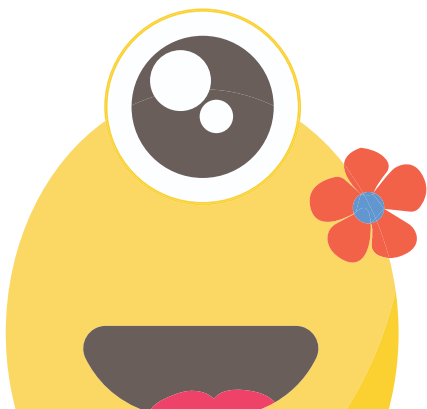


2

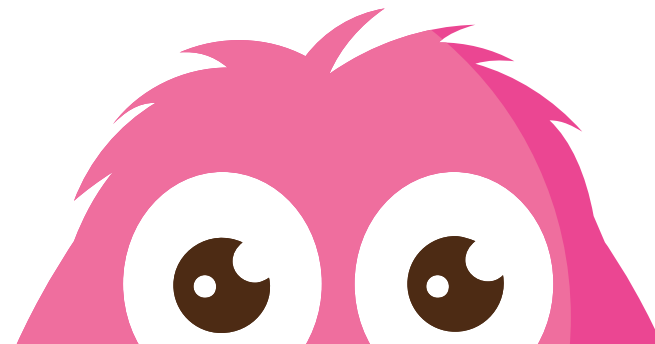


3



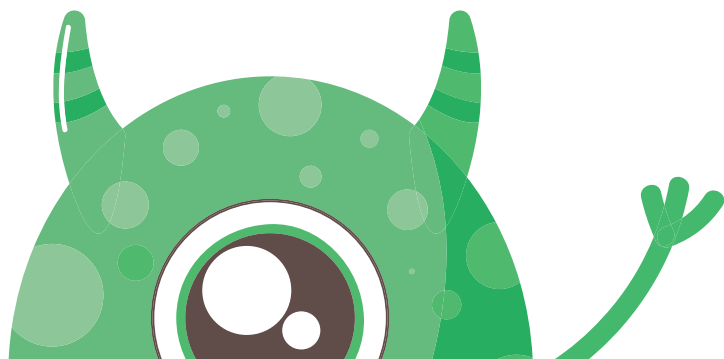


4

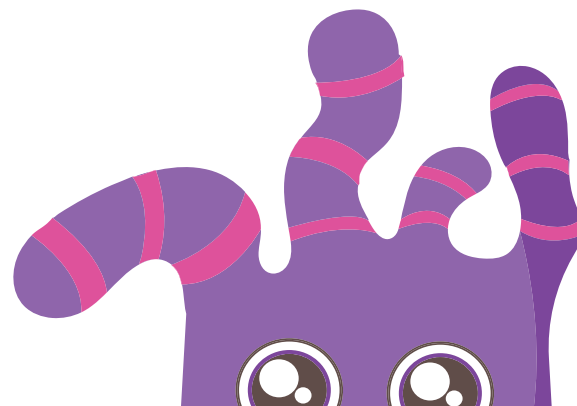


6





7

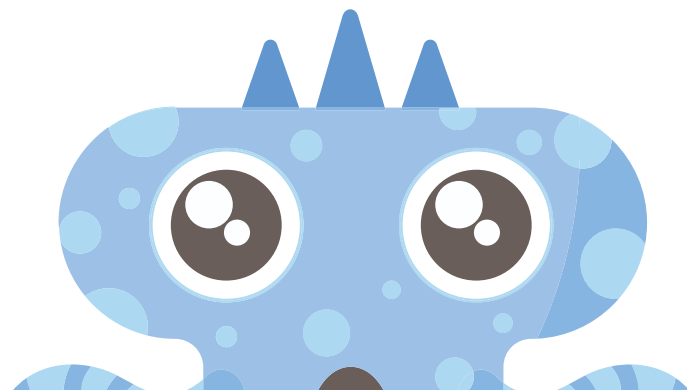


8





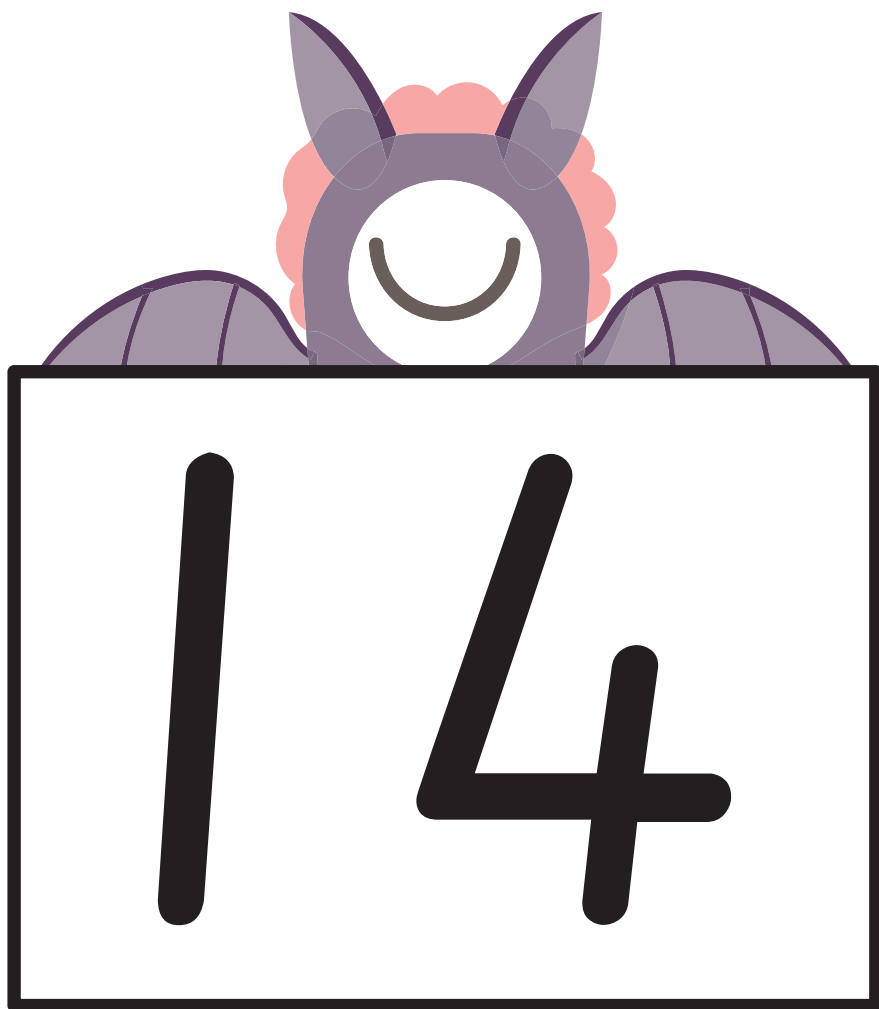
q



||

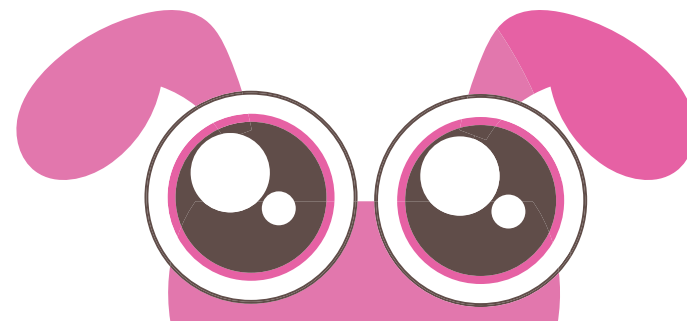






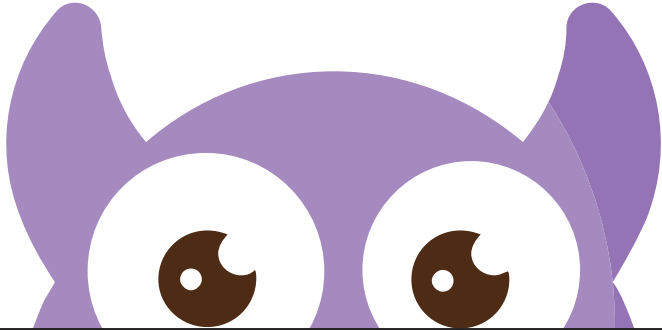


17



18

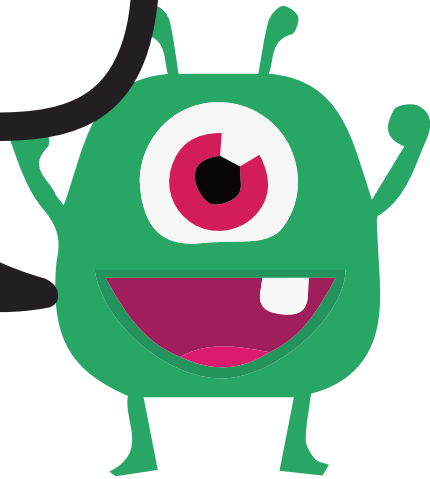




19

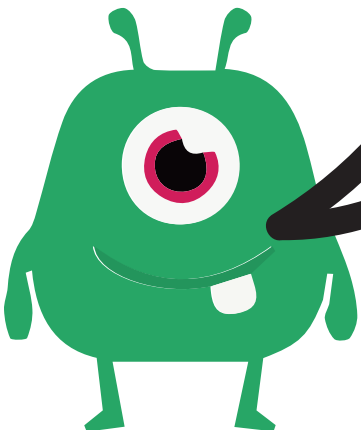


Which
number is
1 more than
12?



© Teacher's Pet 2019 www.tpet.co.uk

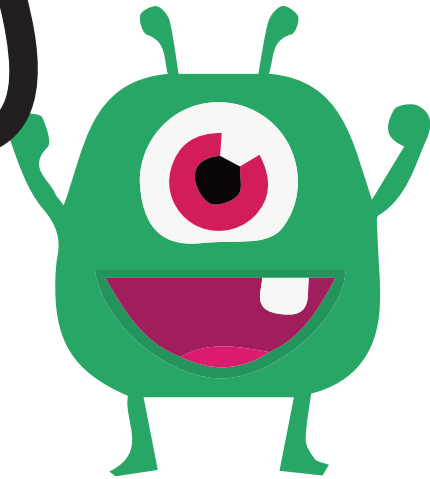
Which
number is
1 more than
18?



© Teacher's Pet 2019 www.tpet.co.uk

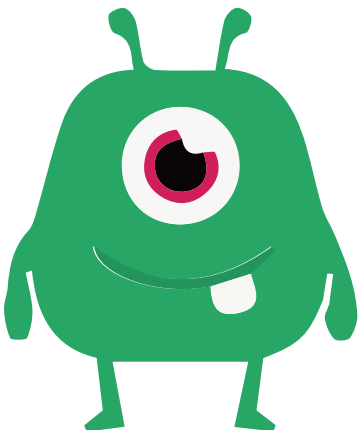


Which
number is
1 less than
9?



© Teacher's Pet 2019 www.tpet.co.uk

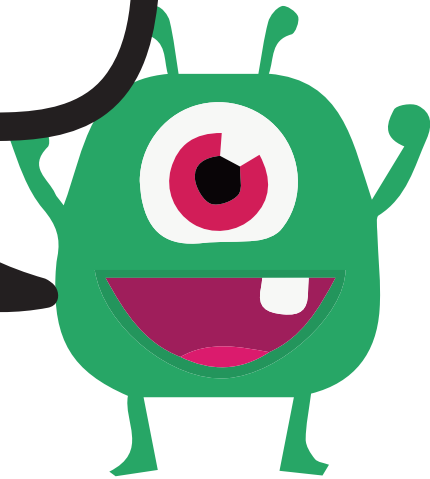
Which
number is
1 less than
17?



© Teacher's Pet 2019 www.tpet.co.uk



Which
number is
2 more than
7?



© Teacher's Pet 2019 www.tpet.co.uk

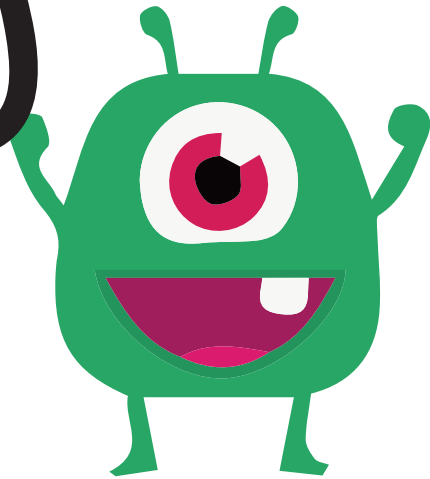
Which
number is
2 less than
15?



© Teacher's Pet 2019 www.tpet.co.uk

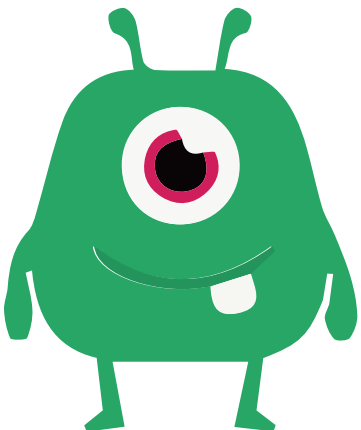


Which
number is
between
13 and 15?



© Teacher's Pet 2019 www.tpet.co.uk

Which
number is
between
18 and 20?



© Teacher's Pet 2019 www.tpet.co.uk

