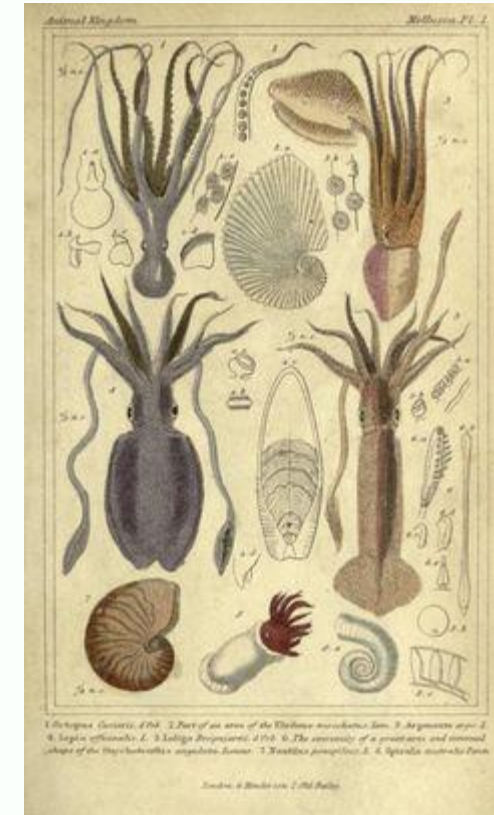


Week 4

WALT: To record details of living things using close observational drawings.

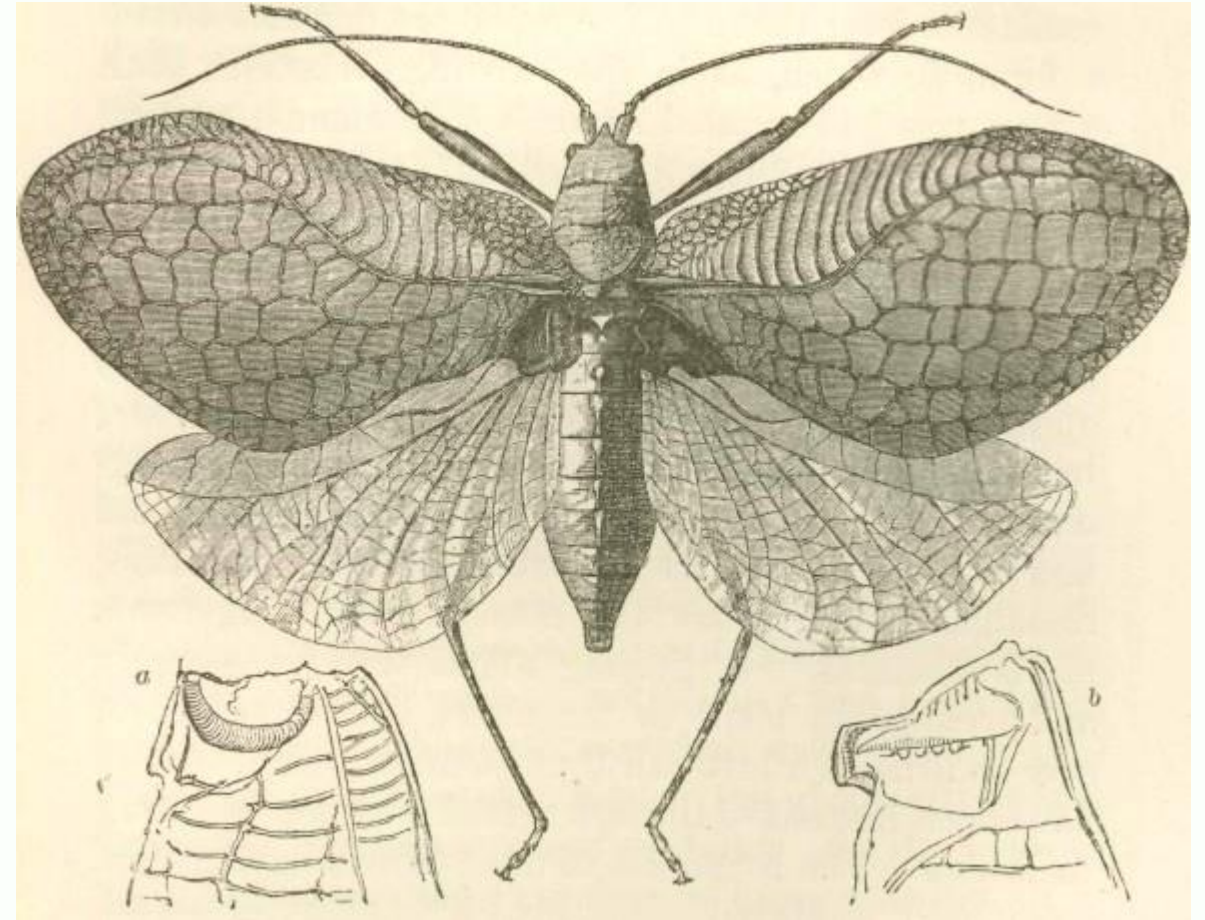
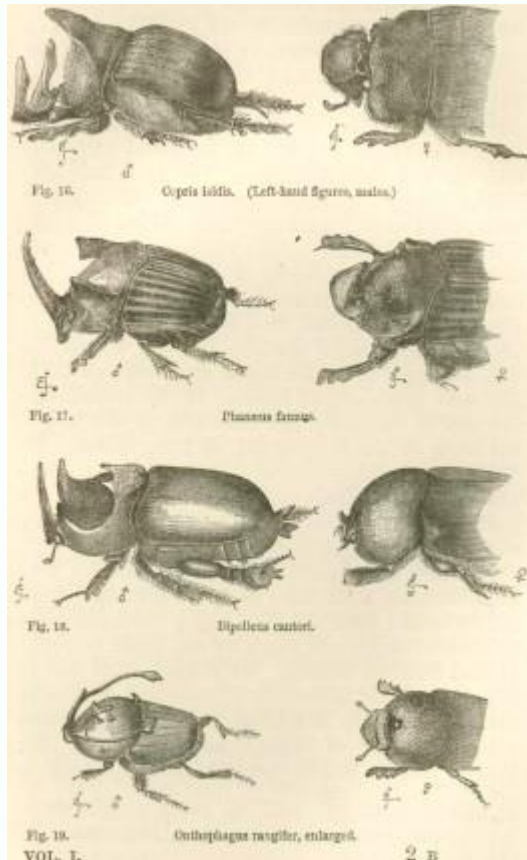
WILF:

- * I can draw an invertebrate with support.
- ** I can make accurate observational drawings of an invertebrate.
- *** I can explicitly show the details of an invertebrate.



For centuries, scientists have used careful and detailed drawings to better understand living things.

The detailed drawings by naturalist Charles Darwin helped us to better understand living things from around the world.



Can these sketches be considered art? Why or why not?

Although sketches and notes are still made by scientists, the artist Levon Biss is using a more modern approach to capturing the detail of some beautiful invertebrates.



<http://microsculpture.net/>

Why do you think he chose to make his photos of insects so large?

Explore Levon Biss' work on his website...

Do you like the photos? Why?

Look at the photos of the beetles.

You would need careful questions to classify the beetles.

You will be creating a large scale observational drawing of a common British insect.

Look again at the photographs...
<http://microsculpture.net/>

When something very small is shown in a very large image, you can see so much of the tiny details and features that you wouldn't normally see.

To classify living things, scientists must look further than the obvious details to identify which species they are looking at.

Watch the clip again.

With this sort of technology available now, so much more can be discovered about tiny species. Levon takes lots of very close-up photos and pieces them back together.

You are going to make a large drawing of a tiny invertebrate to show as many details as possible. (On a piece of A4 paper)

