

# Rainforest Animals

Rainforests are home to more than half of the plants and animals found on the planet.

Over **73,000 different species of animals** have been found in rainforests, including more than...



1600 birds



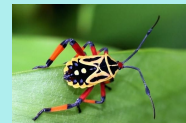
600 mammals



450 reptiles



400 amphibians

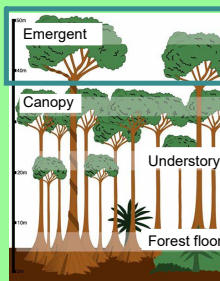


70,000 insects



Different animals live in different layers of the rainforest, depending on where is the best habitat for them.

## Emergent Layer Habitat



Many birds build their nests in the emergent layer, where they are safe away from predators. It is also home to some of the rainforest's butterflies and flying insects.



- Tallest trees in the rainforest.
- More access to sunlight than any other layer.
- Very hot, but lacks shelter.



scarlet macaw



hummingbird

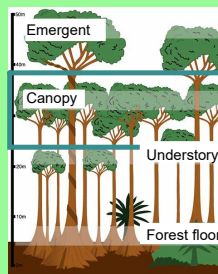


harpy eagle



• blue morpho butterfly

## Canopy Layer Habitat



- Lots of sunlight and rain.
- Wide branches and leaves.
- Full of fruits and nuts all year.

The canopy is the busiest layer of the rainforest. Around 80% of life in the rainforest can be found in the canopy. Animals that live here are **arboreal** meaning they live in trees.



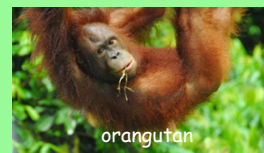
sloth



iguana



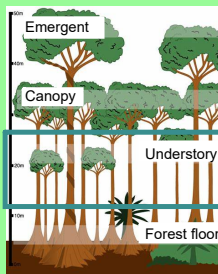
red-eyed frog



orangutan



## Understory Layer Habitat



- Very little sunlight.
- Warm, damp, dark and humid.
- Mostly leafy bushes and small trees.

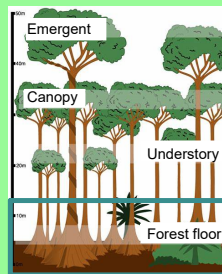


The understory is home to insects, snakes and smaller animals that thrive living in hot and humid environments. There are also some larger predators who use the low trees to watch and pounce on their prey.



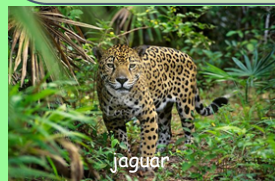


## Forest Floor Layer Habitat



- Ground level of the rainforest.
- Dark and humid.
- Very few plants grow here.

The forest floor is home to the rainforest's largest animals like jaguars, ocelots and elephants.



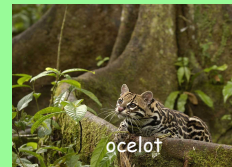
jaguar



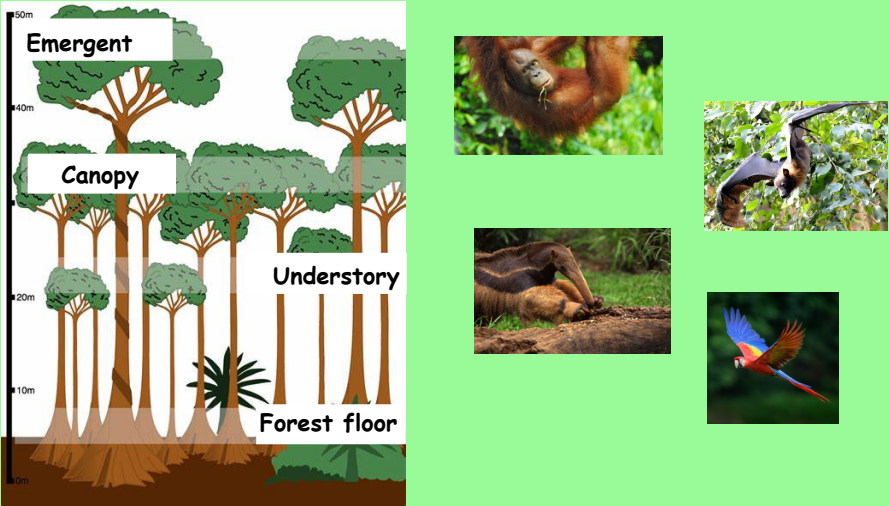
anteater



elephants



ocelot



The diagram illustrates the vertical structure of a rainforest with a height scale on the left: 50m, 40m, 20m, 10m, and 0m. The layers are labeled as follows:
 

- Emergent:** The top layer with the tallest trees reaching above 50m.
- Canopy:** The layer between 20m and 40m, consisting of a dense layer of tree crowns.
- Understory:** The layer between 10m and 20m, with smaller trees and plants.
- Forest floor:** The bottom layer, below 10m, where the ground is covered with fallen leaves and small plants.

 To the right of the diagram are four photographs of animals:
 

- An orangutan hanging from a branch (Canopy).
- A toucan bird (Canopy).
- A sloth resting on a branch (Canopy).
- A colorful parrot (Canopy).

In which of layer of the rainforest would you expect to find each of these animals? Why is that layer the best habitat for them?

Attachments

---

Introduction PP.pptx